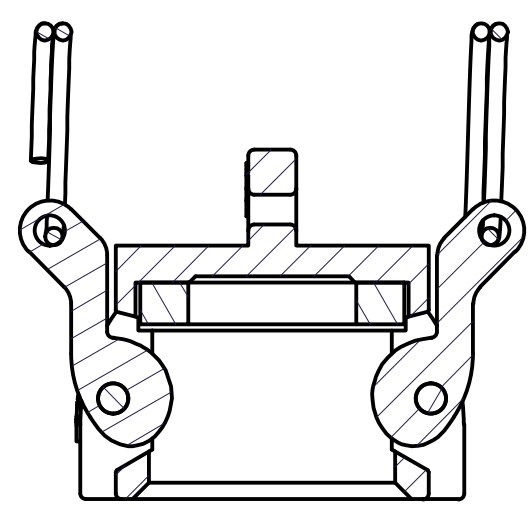
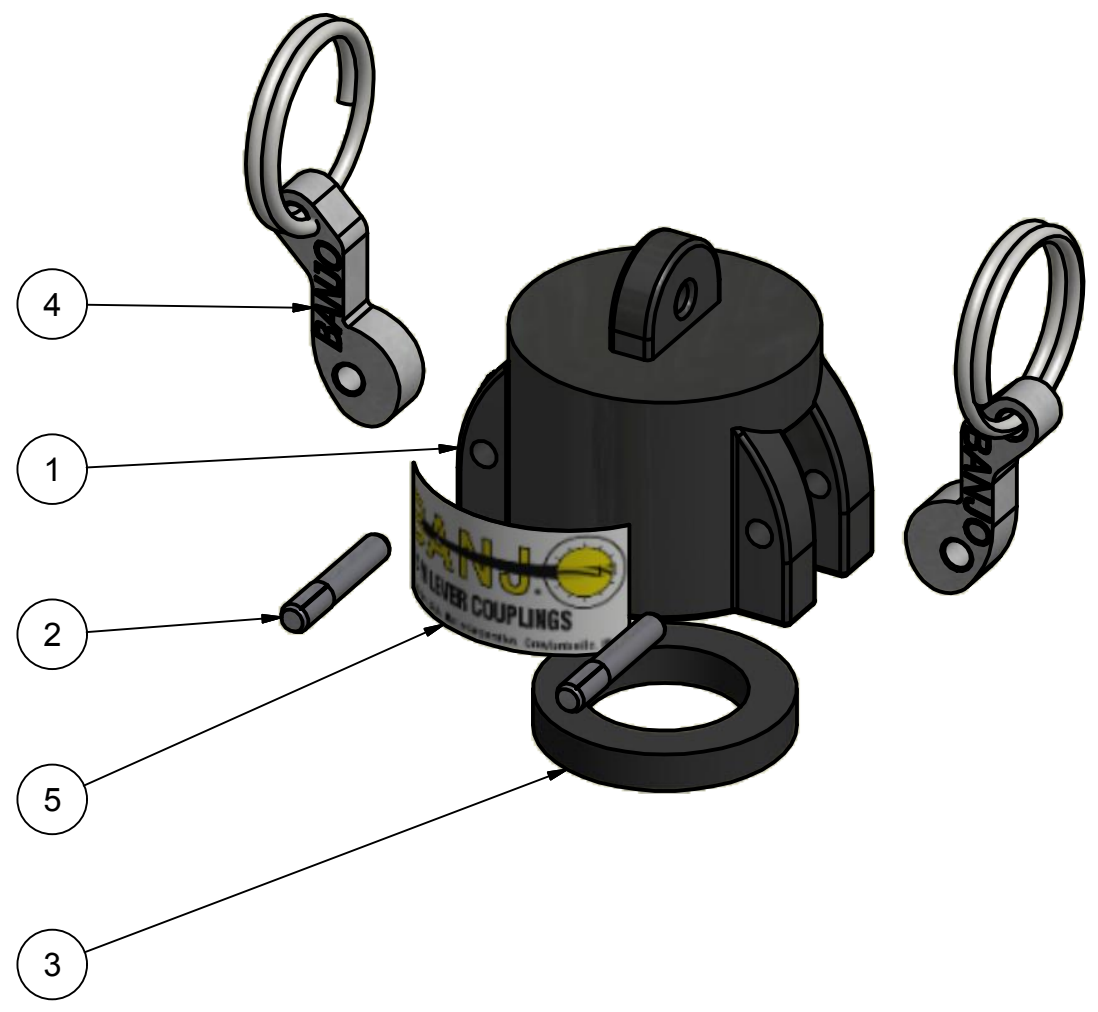
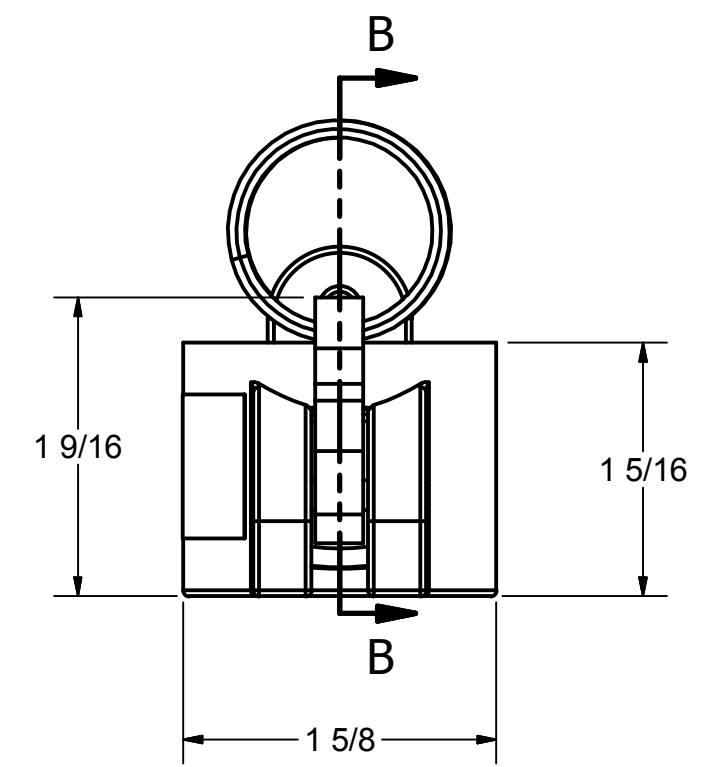
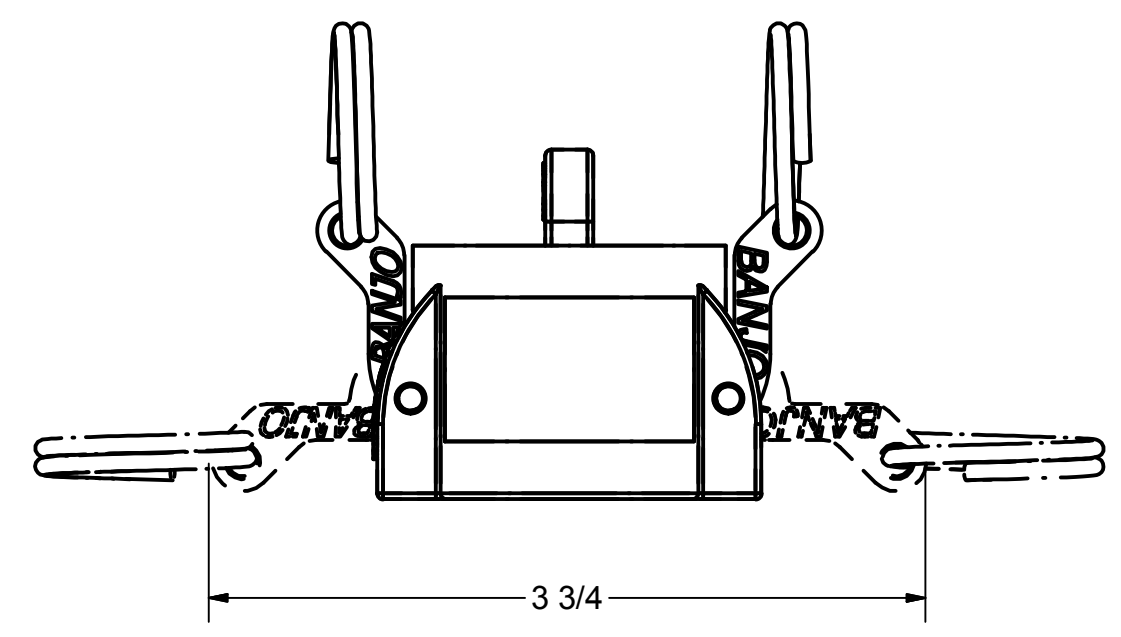


| Parts List | | | |
|------------|-----|-------------|---------------------------|
| ITEM | QTY | PART NUMBER | DESCRIPTION |
| 1 | 1 | 075CAPXM | Machined 3/4" Coupler cap |
| 2 | 2 | 75P | CAM ARM PIN |
| 3 | 1 | 75G | COUPLING GASKET |
| 4 | 2 | 75K | 1" CAM ARM W/ RING |
| 5 | 1 | 100DECAL | Mini Coupling Decal |




SECTION B-B
SCALE 1 : 1



THIS DRAWING AND ALL INFORMATION CONTAINED THEREON ARE THE EXCLUSIVE PROPERTY OF BANJO CORPORATION.

UNLESS SPECIFICALLY NOTED, THIS DRAWING AND ITEMS SHOWN ON THIS DRAWING ARE SUBJECT TO CHANGE AT ANY TIME.



BANJO CORPORATION

150 BANJO DRIVE, CRAWFORDSVILLE, IN 47933
 WEB SITE: WWW.BANJOCORP.COM
 E-MAIL: BANJOSALES@IDEXCORP.COM

| | |
|-------------|---------------------------|
| DESCRIPTION | CAP-FITS 1/2" & 3/4" CPLG |
| PART NUMBER | 075CAP |

4

3

2

1

D

D

C

C

B

B

A

A

4

3

2

1