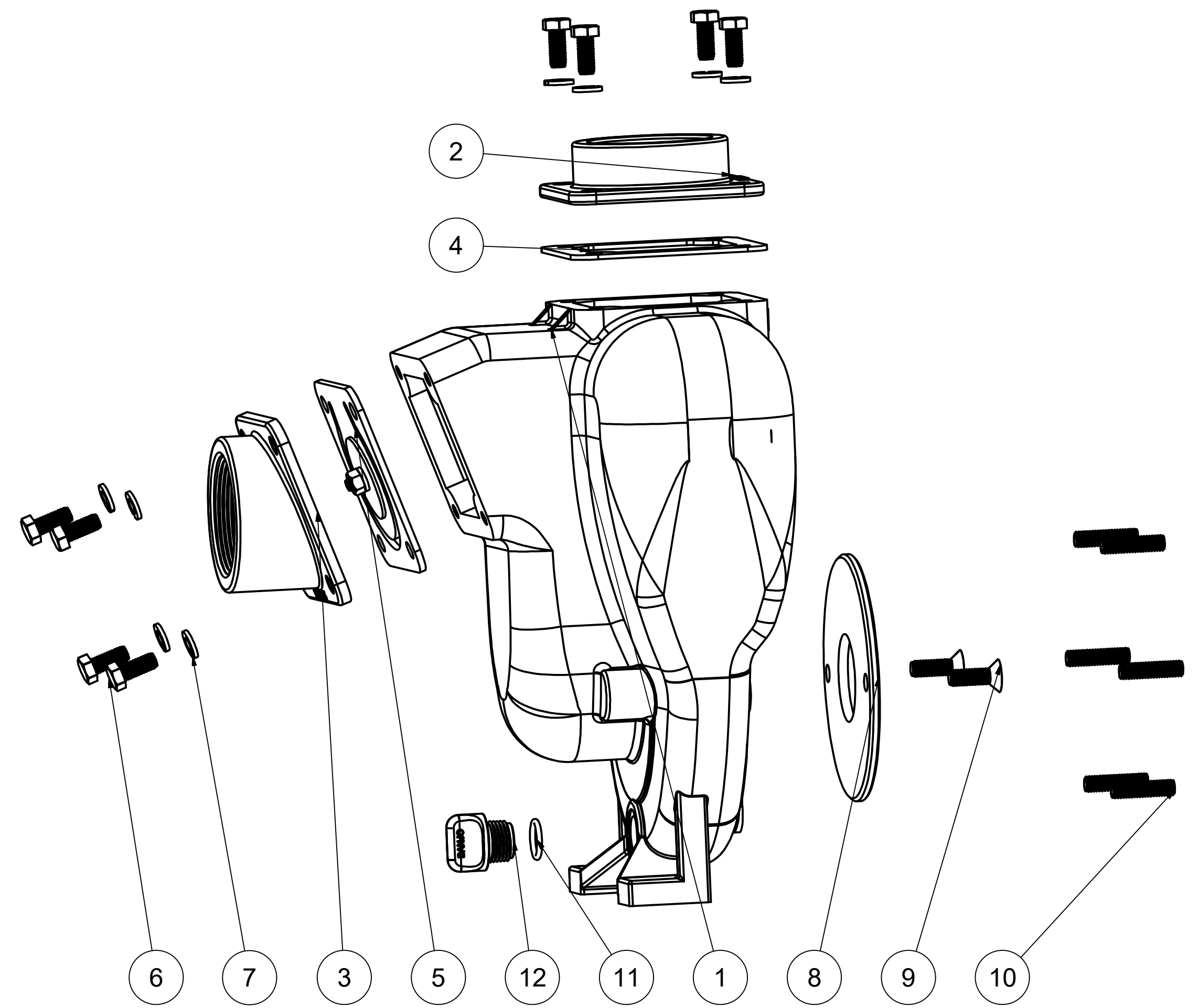



Parts List			
ITEM	QTY	PART NUMBER	DESCRIPTION
1	1	17026SSX	2" PUMP HOUSING
2	1	17000SS	2" OUTLET FLANGE, SS
3	1	17002SS	2" INLET FLANGE, SS
4	1	17014	OUTLET FLANGE GASKET, FKM
5	1	17017	CI PUMP CHECK VALVE ASSY
6	8	17019	5/16-18 X 3/4" HHCS
7	8	V10118	5/16" LOCKWASHER
8	1	17011SS	WEAR PLATE
9	2	17130SS	5/16-18 X 1" FHSCS
10	6	17042	5/16-18 X 1 1/4" STUD
11	1	UV15163V	#114 O'RING, FKM
12	1	12777SS	1/2" DRAIN PLUG



ZONE	REV	DESCRIPTION	DATE	APPROVED
A6	B1	ADDED UV15163V	9/26/14	MJC
A6	B	ADDED 12777SS	9/26/14	MJC
N/A	A	ADDED 17011SS, 17130SS, & 17042	10/25/12	MJC

REVISION HISTORY

<small>TOLERANCE UNLESS OTHERWISE SPECIFIED DECIMALS 0.00 = +/- 0.010 DECIMALS 0.000 = +/- 0.005 FRACTIONS 1/32 = +/- 1/32 ANGLES = +/- 1 BREAK ALL SHOWN CORNERS W/ 1/32 R UNLESS OTHERWISE SPECIFIED</small>		 <p>BANJO CORPORATION 150 BANJO DRIVE, CRAWFORDSVILLE, IN 47933</p>	
<small>DRAWN</small> MJC	<small>CHECKED</small> 7/20/2010		
<small>SCALE</small> D	<small>DWG TYPE</small> D	<small>DWG NO</small> 17026SS	<small>REV</small> A