

2



1

REVISION HISTORY

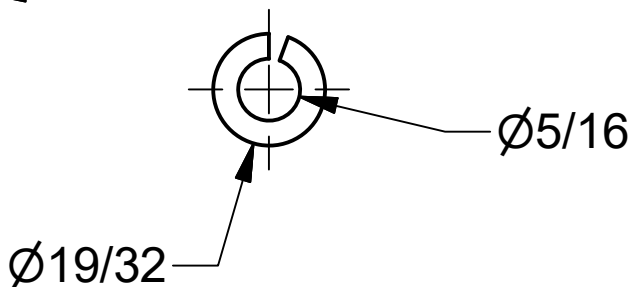
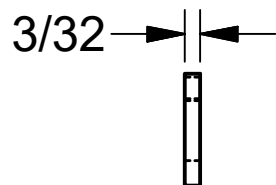
ZONE	REV	DESCRIPTION	DATE	APPROVED
	0	Redrew in Inventor	12/01/2010	ALR

B

B

Note:

Purchased Item
 5/16" A.N.S. Reg. Helical Spring LockWasher
 Matl: 18-8 SS
 Per ANSI/ASMT B18.21.1-1990



A

A

TOLERANCE UNLESS OTHERWISE SPECIFIED
 DECIMALS 0.00 = +/- 0.010
 DECIMALS 0.000 = +/- 0.005
 FRACTIONS 1/X = +/- 1/32
 ANGLES = +/- 1
 BREAK ALL SHOWN CORNERS W/ 1/32 R
 UNLESS OTHERWISE SPECIFIED



DRAWN
 MJC 9/16/2003

BANJO CORPORATION

150 BANJO DRIVE, CRAWFORDSVILLE, IN 47933

TITLE
 5/16" SS LockWasher

SIZE A	DWG TYPE ENG	DWG NO V10118	REV
-----------	-----------------	------------------	-----

SCALE	SHEET 1 OF 1
-------	--------------

2



1