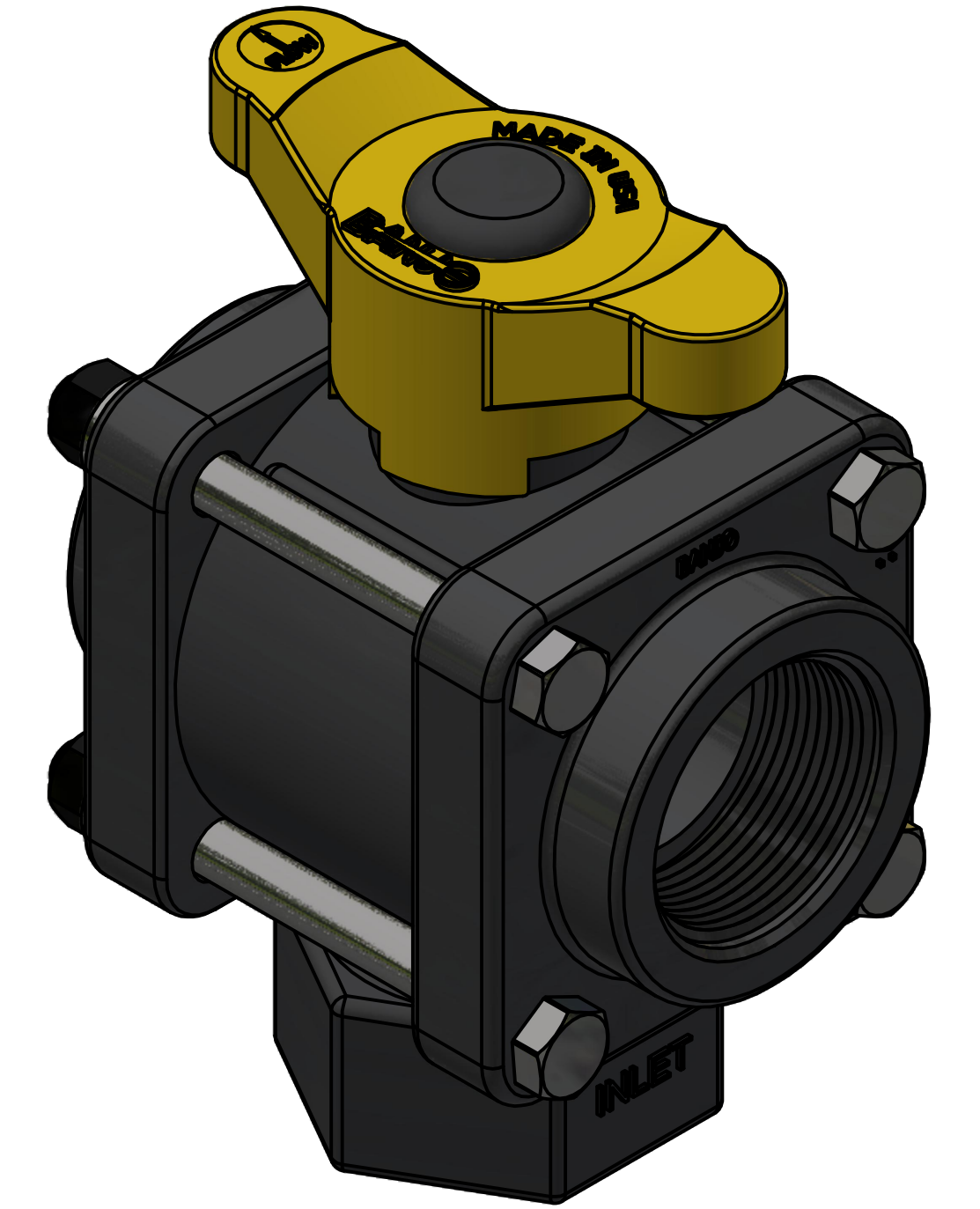
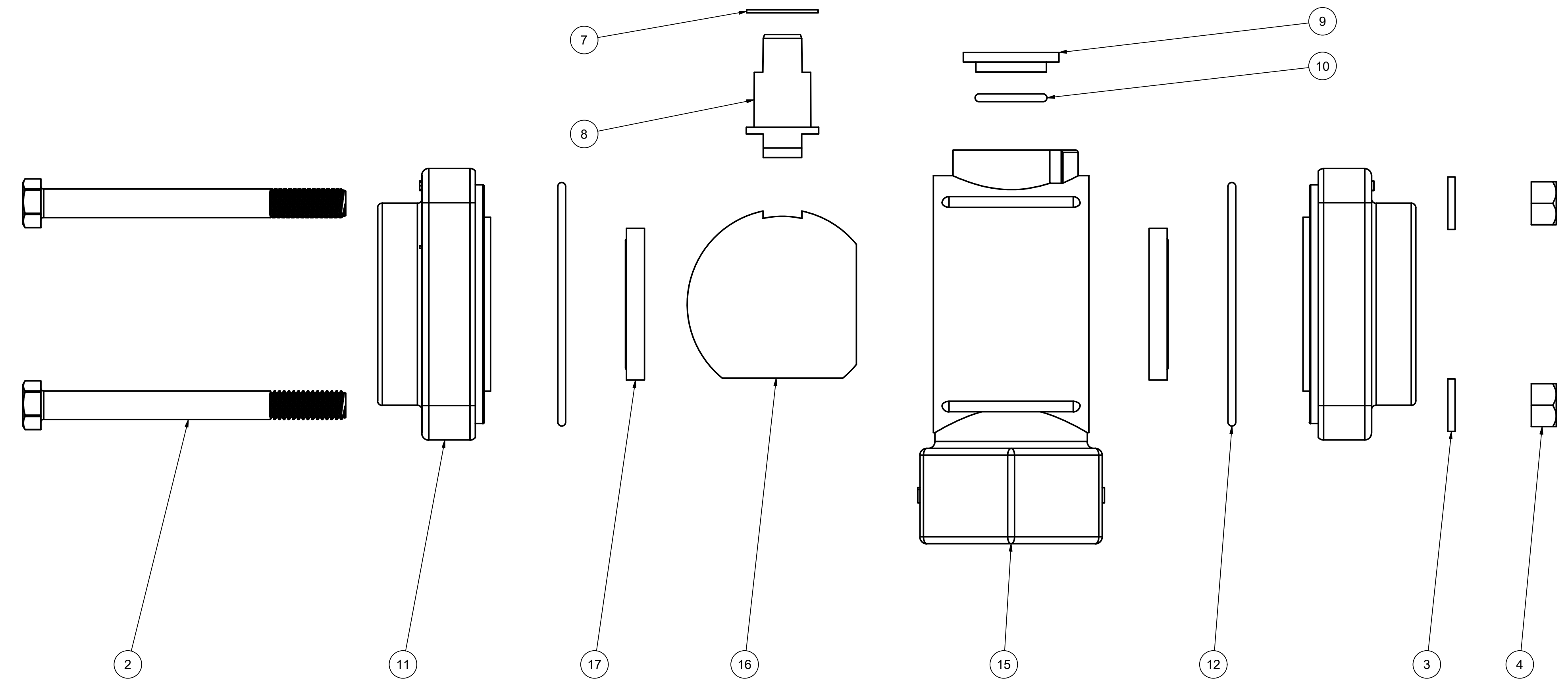
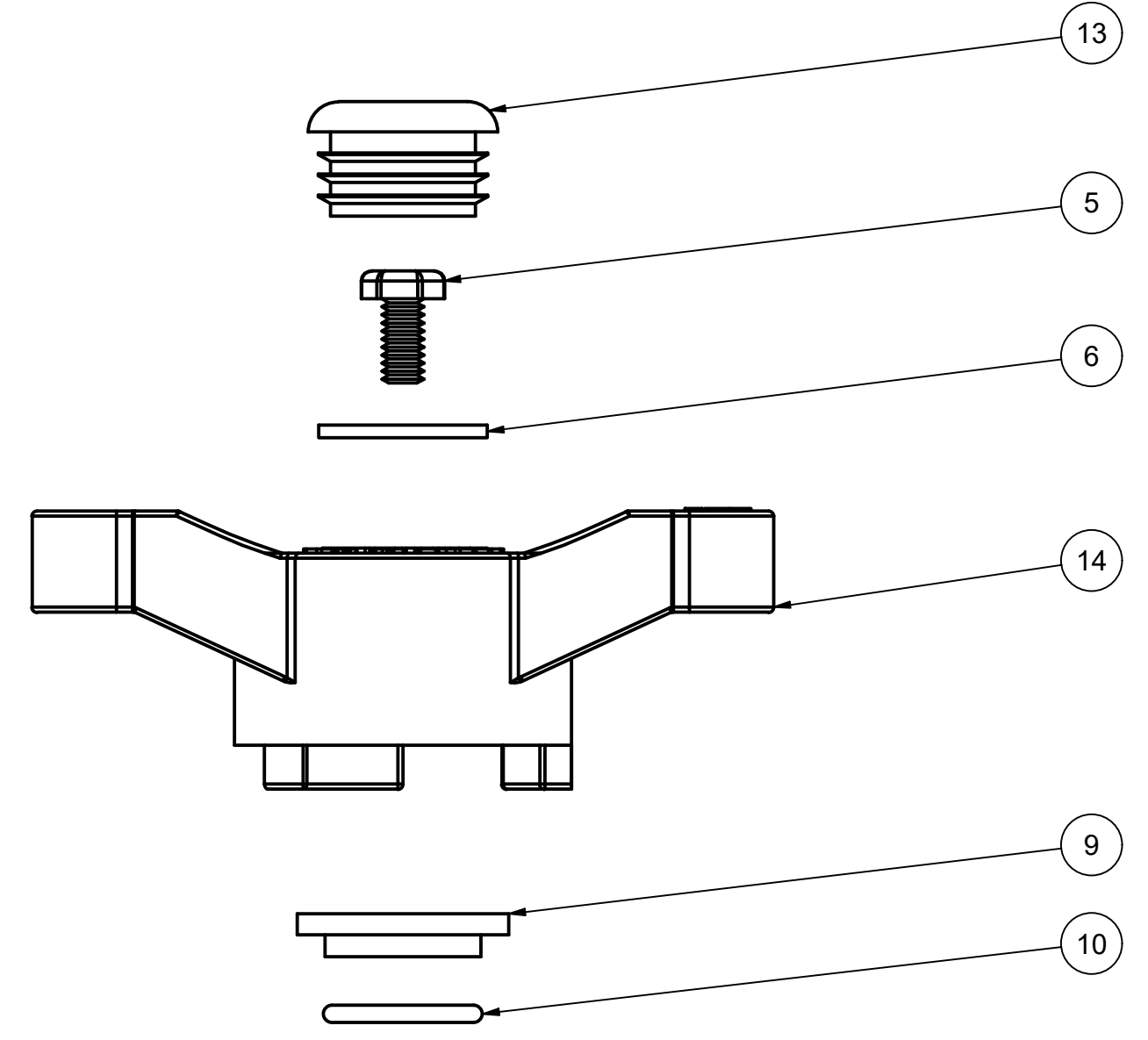


PARTS LIST			
ITEM	QTY	PART NUMBER	DESCRIPTION
2	4	V20017	3/8-16 X 4" HHCS
3	4	V20018	3/8" LOCKWASHER
4	4	V20019	3/8-16 HEX NUT
5	1	V20020	2" handle Bolt
6	1	V20021	Handle Washer
7	1	V20060	VALVE STEM THRUST BEARING
8	1	V20151M	BALL STEM FOR 1-1/2" & 2" VALVE
9	1	V20159	2" STEM BUSHING
10	1	V20163	AS568A -116 O-RING, FKM, BROWN
11	2	V20257	1 1/2" FNPT ENDPLATE, MACHINED
12	2	V20264	AS568A -151 O-RING, FKM, BROWN
13	1	V20353C	1 1/8" CAPLUG
14	1	V20353TB	2" BOTTOM LOAD T-HANDLE
15	1	V20354B	1 1/2" NPT BL VALVE BODY, MACHINED
16	1	V20355B	2" 3-WAY BL BALL, TUMBLED
17	2	VE20258A	2" VE Seat TFM



THIS DRAWING AND ALL INFORMATION CONTAINED THEREON ARE THE EXCLUSIVE PROPERTY OF BANJO CORPORATION.

UNLESS SPECIFICALLY NOTED, THIS DRAWING AND ITEMS SHOWN ON THIS DRAWING ARE SUBJECT TO CHANGE AT ANY TIME.

BANJO CORPORATION 150 BANJO DRIVE, CRAWFORDSVILLE, IN 47933 WEB SITE: WWW.BANJO.CORP.COM E-MAIL: BANJOSALES@IDEXCORP.COM	
DESCRIPTION	1 1/2" FPT BOTTOM LOAD VALVE
PART NUMBER	V150BL