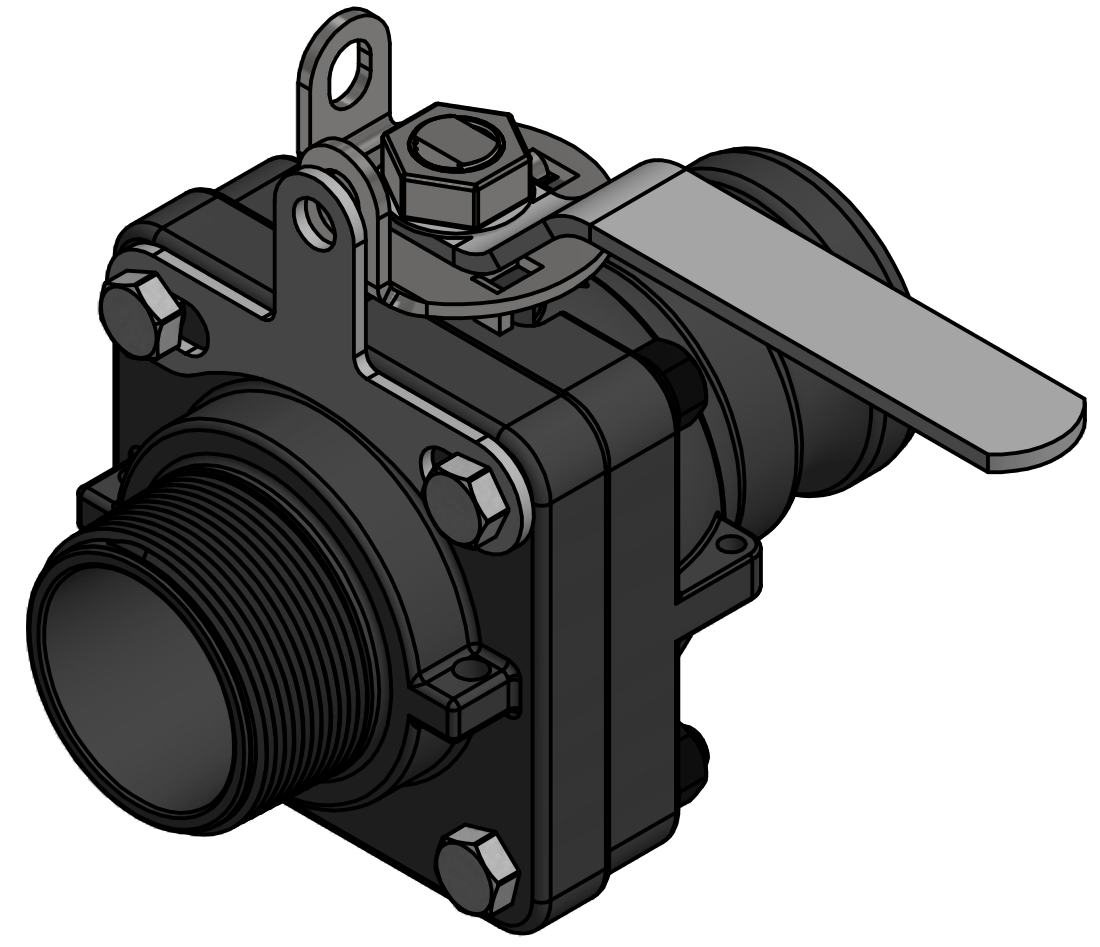
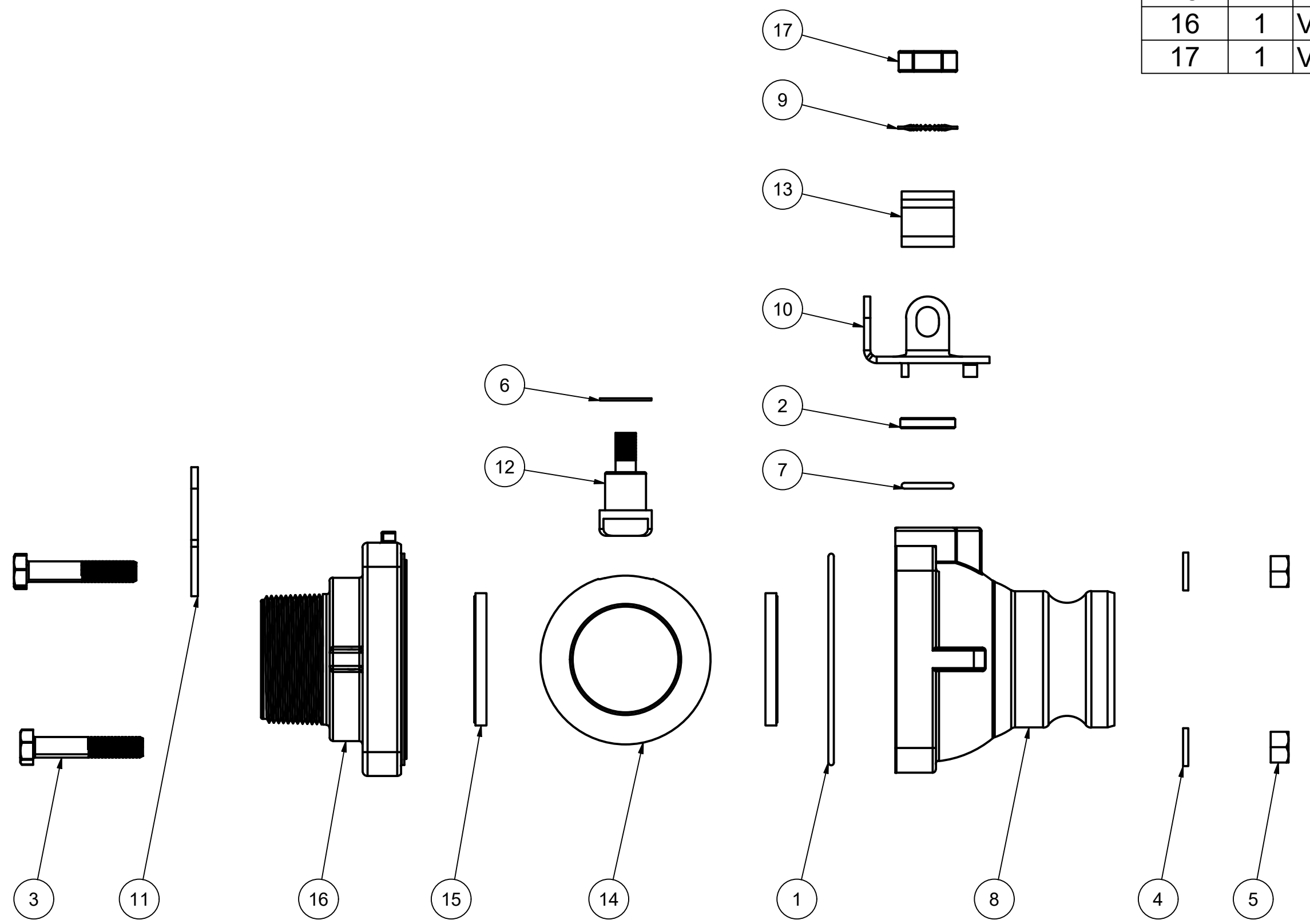


PARTS LIST			
ITEM	QTY	PART NUMBER	DESCRIPTION
1	1	A93M250V	2.50 MM x 93 MM ID METRIC O-RING, FKM, BROWN
2	1	SB075100188T	SLEEVE BEARING PTFE 3/4 x 1 x 0.188
3	4	V20010SS	3/8-16 X 2" HHCS
4	4	V20018	3/8" LOCKWASHER
5	4	V20019	3/8-16 HEX NUT
6	1	V20060	VALVE STEM THRUST BEARING
7	1	V20163	AS568A -116 O-RING, FKM, BROWN
8	1	VF25254	2" FP MALE ADAPTER STUBBY BODY, MACHINED
9	1	VS20021	5/8" Internal Tooth Lock Washer
10	1	VS20101SS	Handle Stop Plate
11	1	VS20102SS	3" Std Port Stubby Valve handle Lock
12	1	VS20151SSB	2" SS VALVE STEM, NO GROOVES
13	1	VS25153SS	2" FP Valve handle, SS
14	1	VS25255SS	2" FP Stubby SS Hollow Ball
15	2	VS25258AR1	2" FP BALL SEAT
16	1	VSMT25356	2" FP 4-BOLT MALE THREAD ENDPLATE
17	1	VSS15020	5/8"-18 SS JAM NUT



THIS DRAWING AND ALL INFORMATION CONTAINED THEREON ARE THE EXCLUSIVE PROPERTY OF BANJO CORPORATION.

UNLESS SPECIFICALLY NOTED, THIS DRAWING AND ITEMS SHOWN ON THIS DRAWING ARE SUBJECT TO CHANGE AT ANY TIME.

BANJO CORPORATION  
 150 BANJO DRIVE, CRAWFORDSVILLE, IN 47933  
 WEB SITE: WWW.BANJOCORP.COM  
 E-MAIL: BANJOSALES@IDEXCORP.COM

DESCRIPTION  
 2" FP MALE ADAPTER X 2" MNPT, SS HARDWARE

PART NUMBER  
 VSFMT204HSFP